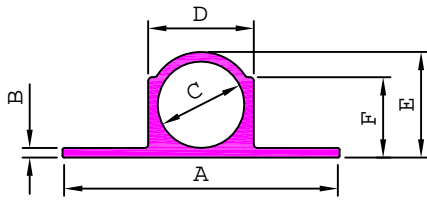
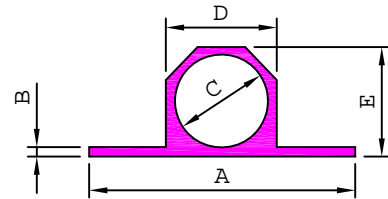


TOWER BOLT



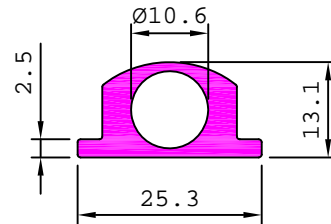
SI No	Section No	A	B	C	D	E	F	Weight kg/m
1	18001	24.50	0.75	8.63	10.10	10.10	8.15	0.121
2	18002	31.75	1.39	9.90	12.45	12.45	9.52	0.248
3	18003	32.00	1.60	11.00	14.00	14.00	11.00	0.302
4	18005	31.75	1.52	10.28	12.82	12.82	9.52	0.253
5	18006	38.00	2.50	13.00	18.00	18.00	14.00	0.570
6	18007	44.00	2.00	13.00	17.00	17.00	13.00	0.493
7	18008	30.00	0.75	9.90	11.40	11.40	9.50	0.156
8	18009	25.00	1.35	8.50	11.00	11.20	9.00	0.202
9	18013	37.50	1.70	12.40	15.70	15.80	12.00	0.379
10	18015	31.75	1.70	10.20	12.40	12.40	9.70	0.244
11	18016	38.00	2.30	12.60	17.10	17.10	13.00	0.506
12	18017	31.20	1.57	9.70	11.90	11.90	9.10	0.229
13	18022	30.75	1.02	9.50	11.30	11.30	9.00	0.176
14	18023	31.75	1.10	10.20	12.10	12.10	9.50	0.197
15	18027	37.50	2.00	12.80	16.50	16.50	13.50	0.439
16	18029	37.00	2.20	12.00	15.00	15.50	11.70	0.396
17	18036	36.00	1.85	12.00	14.90	14.90	11.00	0.342
18	18037	30.00	0.98	9.50	10.90	10.90	8.60	0.150
19	18038	44.00	2.00	13.40	16.40	16.50	14.50	0.450
20	18039	32.00	1.25	11.00	13.40	13.40	10.50	0.246
21	18040	37.00	1.83	12.00	15.00	15.00	11.70	0.354
22	18042	23.50	0.70	8.50	9.80	9.80	7.95	0.109
23	18043	28.00	0.59	9.50	10.68	10.68	8.00	0.113
24	18045	32.00	1.30	11.00	13.60	13.60	10.80	0.262
25	18049	38.00	2.35	13.00	17.50	17.50	13.20	0.520
26	18051	31.00	1.10	9.40	11.40	11.40	8.70	0.188
27	18052	31.50	1.20	10.80	12.80	12.80	10.10	0.216
28	18055	31.75	1.40	10.20	12.40	12.40	9.10	0.226
29	18056	31.20	1.35	9.70	11.70	11.70	9.00	0.206
30	18057	38.00	1.90	12.60	16.20	16.20	12.60	0.419
31	18060	44.00	1.65	12.80	15.80	15.80	13.80	0.406
32	18062	32.00	1.22	11.00	13.44	13.40	10.80	0.248
33	18068	31.75	2.00	10.20	12.40	12.40	9.70	0.261



SI No	Section No	A	B	C	D	E	Weight kg/m
1	18018	31.80	1.50	9.80	12.40	12.70	0.261
2	18019	32.00	1.35	10.80	13.10	13.50	0.255

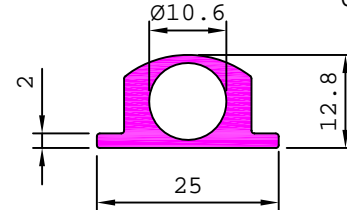
18063

0.411 kg/m



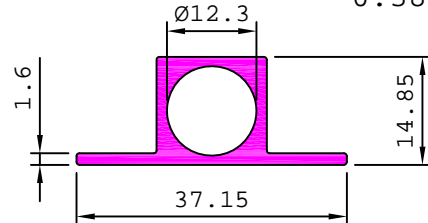
18064

0.361 kg/m



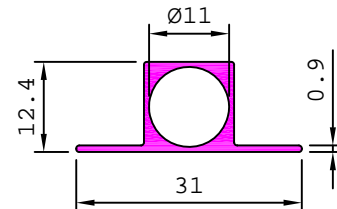
18065

0.381 kg/m



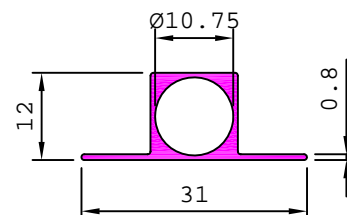
18066

0.203 kg/m



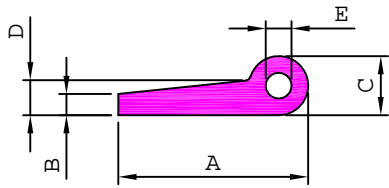
18067

0.184 kg/m



HOLLOW HINGES & SPECIAL HINGES

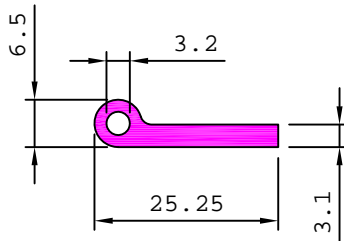
HINGES - HOLLOW



SL. No.	Section No.	A	B	C	D	E	Weight kg/m
1	18361	24.30	2.10	6.00	2.60	3.60	0.170
2	18353	35.76	3.10	9.52	3.60	5.00	0.390
3	18355	37.00	4.00	11.00	4.76	5.55	0.515

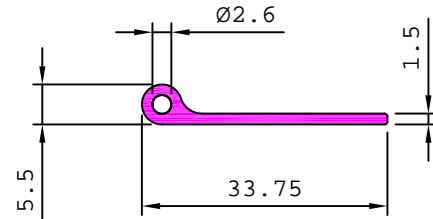
18357

0.231 kg/m



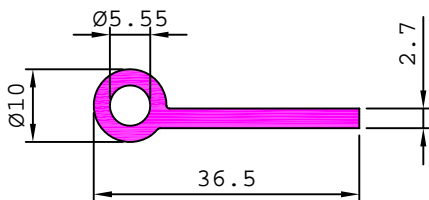
18362

0.172 kg/m



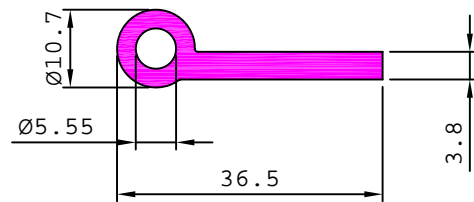
18401

0.343 kg/m



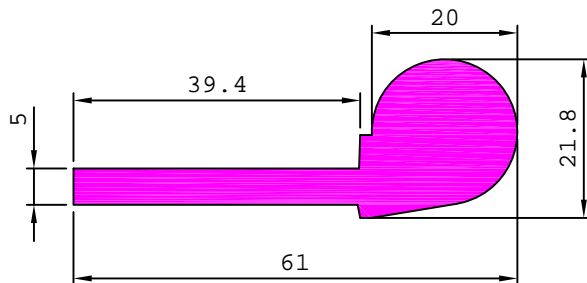
18402

0.450 kg/m



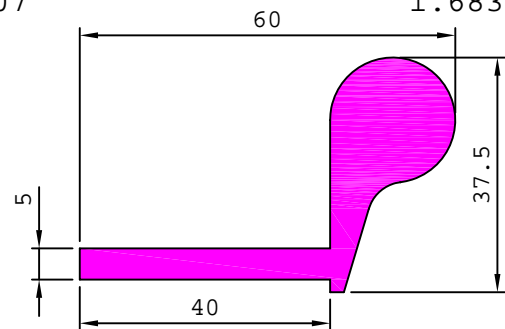
18406

1.515 kg/m



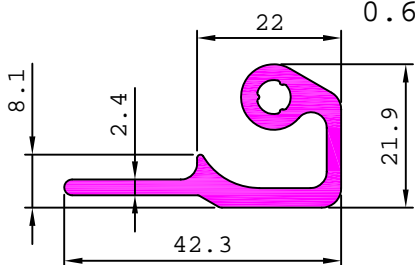
18407

1.683 kg/m



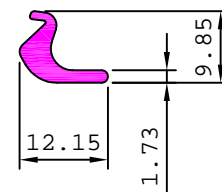
18425

0.632 kg/m



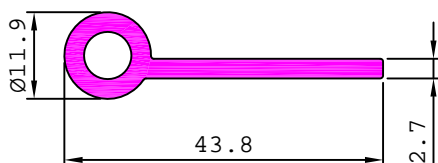
18426

0.118 kg/m



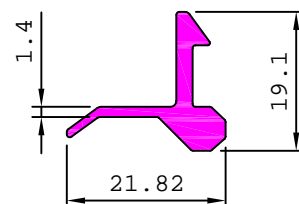
18461

0.446 kg/m



18427

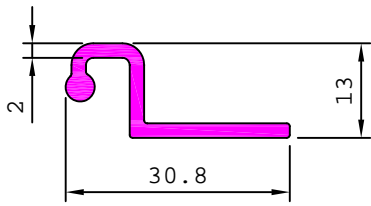
0.250 kg/m



SPECIAL HINGES & ALDROP

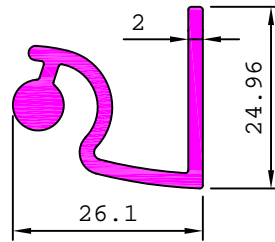
S4459

0.257 kg/m



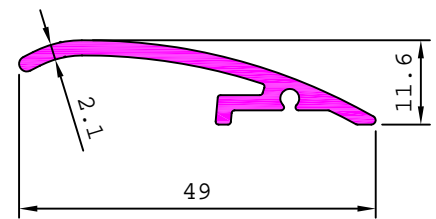
S4460

0.450 kg/m



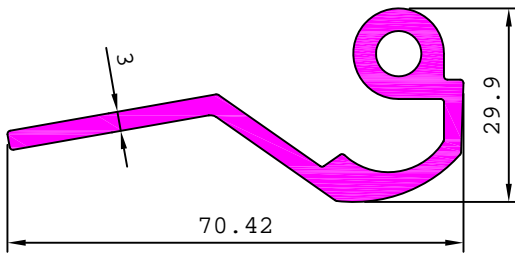
S5062

0.361 kg/m



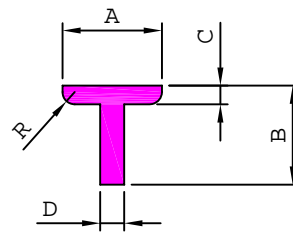
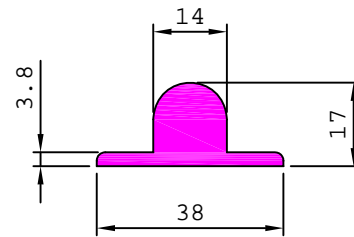
S5061

1.098 kg/m



18502

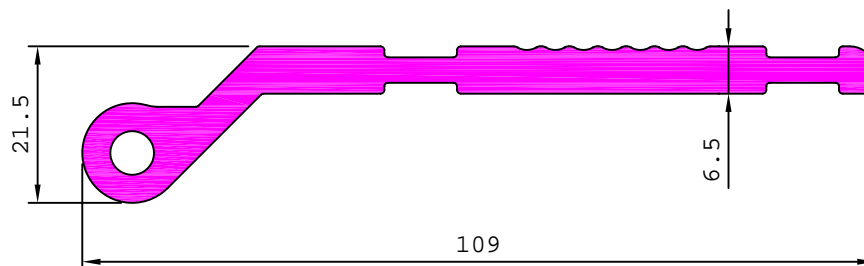
0.832 kg/m



SL. No.	Section No.	A	B	C	D	R	Weight kg/m
1	18504	38.00	35.00	3.20	6.50	3.00	0.875
2	18509	41.50	41.50	3.85	6.80	2.50	1.115
3	18505	41.50	41.50	4.15	7.50	2.50	1.214
4	18508	42.00	38.00	3.25	6.75	2.00	0.997
5	18506	42.00	40.00	4.00	7.70	2.50	1.195
6	18501	42.00	40.00	4.20	8.00	2.50	1.242

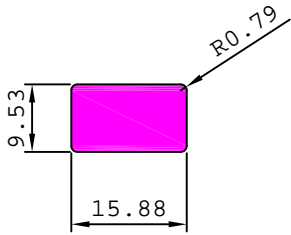
S5163

1.851 kg/m

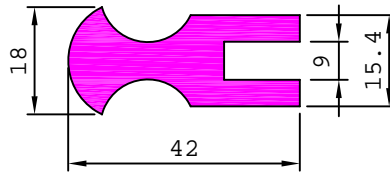


HOLLOW HINGES & SPECIAL HINGES, ALDROP

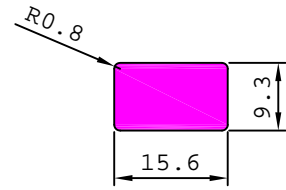
18452 0.407 kg/m



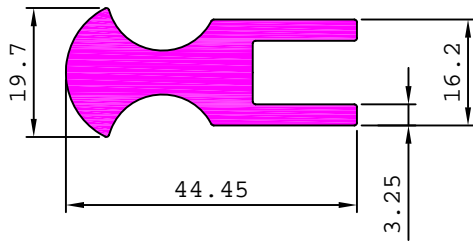
18456 1.060 kg/m



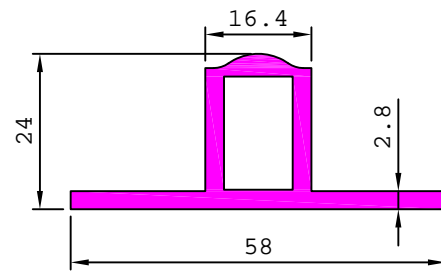
18458 0.390 kg/m



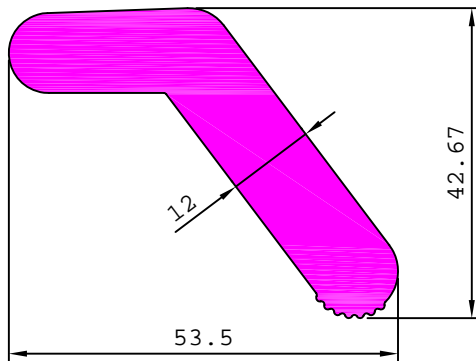
18460 1.220 kg/m



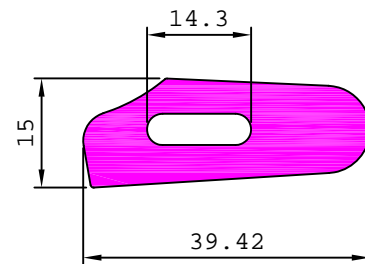
18459 0.828 kg/m



28072 2.102 kg/m



28073 1.120 kg/m



S5315 4.811 kg/m

